

Ford

RANGER

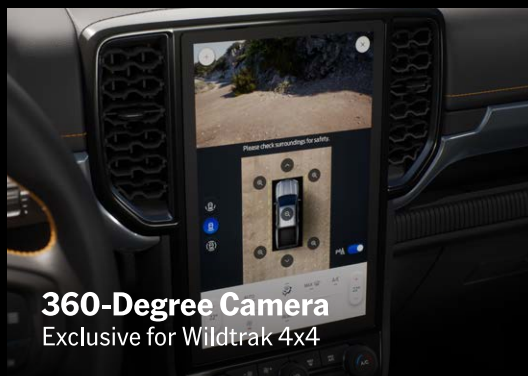
With 5-Year Warranty



BUILT FOR ADVENTURE, POWERED BY PERFORMANCE



2.0L Bi-Turbo and Turbo Diesel Engine



360-Degree Camera
Exclusive for Wildtrak 4x4



Zone Lighting
Exclusive for Wildtrak

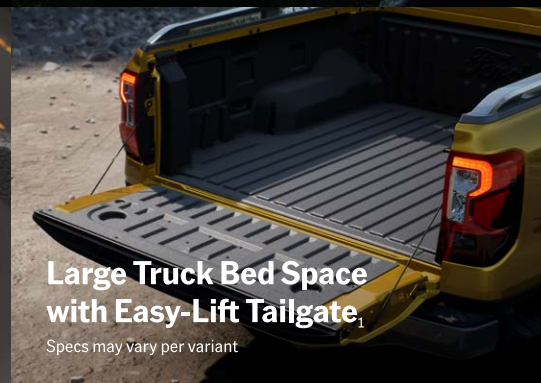


Rear Box Steps



Selectable Drive Modes

Specs may vary per variant



Large Truck Bed Space with Easy-Lift Tailgate¹

Specs may vary per variant

FORD RANGER FEATURES

THE FORD APP

Model	Wildtrak 4x4	Wildtrak 4x2	Sport 4x4	Sport 4x2	XLT 4x2	XLS 4x2	XL+ 4x4	
Dimensions								
Overall Dimensions (LxWxH)	mm 5,370 x 1,918 x 1,884						5,350 x 1,918 x 1,884	
Bed Box Dimensions (LxWxH)	mm 1,564 x 1,584 x 540							
Ground Clearance	mm 235							
Water Wading Depth	mm 800							
Engine								
Type	2.0L Bi-Turbo Diesel			2.0L Turbo Diesel				
Displacement	cc 1,996			1,996				
Maximum Power	PS@rpm 210 @ 3,750			170 @ 3,500				
Maximum Torque	Nm@rpm 500 @ 1,750-2,000			405 @ 1,750-2,500				
Transmission								
Type	10-Speed Automatic			6-Speed Automatic			6-Speed Manual	
Chassis & Suspension								
Front Suspension	Double Wishbone with Coil Spring and Anti-Roll Bar							
Rear Suspension	Leaf Springs							
Electronic Locking Rear Differential	With		With				With	
Front / Rear Brakes	Front / Rear Ventilated Discs			Ventilated Discs / Drum				
Steering System	Electric Power Assisted Steering (EPAS)							
Wheel Size and Type	18" Alloy			17" Alloy		16" Alloy	16" Steel	
Tire	255/65R18			255/70R17		255/70R16		
Beadlock Style Wheels	-		With (for Special Edition)				-	
Exterior								
Headlights	Matrix LED		LED Multi-Reflector			Reflector		
Adaptive Front Lighting System	With						-	
Daytime Running Lamps			LED		LED		-	
Taillights			LED				Reflector	
Zone Lighting	With						-	
Wipers	Rain-Sensing					Variable Intermittent		
Exterior Mirrors	Power Folding / Power Adjustable / Side Turn Indicators				Manual Folding / Power Adjustable / Side Turn Indicators			
Side Steps	With							
Rear Box Steps				With				
Bedliner	With							
Roof Rails	With						-	
Front Tow Hooks	Dual					Single		
Easy-lift Tailgate	With							
Vehicle Body Decal	-		With (for Special Edition)				-	
Interior and Convenience								
Selectable Drive Modes	With							
Terrain Management System	With						-	
Remote Key	Smart Keyless Entry with Push Button Start							With
Instrument Cluster				8" Digital				
Rear View Mirror	Auto-Dimming							Day / Night
Air Conditioning	Dual-Zone Electronic Automatic Temperature Control		Single-Zone Manual Air Temperature Control					
Auxiliary 12-Volt Power Outlets	x2 (1st Row and Cargo area)			x2 (1st Row and 2nd Row)				
230-Volt Inverter	x2 (2nd Row and Cargo area)							
Electric Parking Brake	With							
Seating								
Seat Material	Leather and Synthetic Leather with Wildtrak Styling		Leather and Synthetic Leather with Unique Sport Styling		Fabric			
Front	8-Way Power Adjust Driver & 4-Way Manual Adjust Passenger		6-Way Manual Adjust Driver & 4-Way Manual Adjust Passenger			4-Way Manual Adjust Driver & Passenger		
Rear	Bench Seat with Center Armrest and Fold-up Function			Bench Seat with Fold-up Function				
Audio & Connectivity								
Central Display	12" Colored Portrait Touchscreen			10" Colored Portrait Touchscreen				
Connectivity	SYNC ⁴ A with Wireless Apple CarPlay [®] & Android Auto [™] Compatibility (Voice Commands available with Wildtrak Variants)							
Dual USB Ports (Type A & C)	1 st and 2 nd Rows			1 st Row				
Windscreen-mounted USB Port	With							
Wireless Charger	With							
Speakers				x6		x4		
Advanced Driver Assist Technology								
Adjustable Speed Limiter	With							
Cruise Control	With							
Adaptive Cruise Control with Stop & Go and Lane Centering	With						-	
Auto High Beam	With						-	
Autonomous Emergency Braking (AEB) with Pedestrian Detection	With						-	
Pre-Collision Assist	With						-	
Forward Collision Warning System	With						-	
Evasive Steer Assist	With						-	
Lane Departure Warning & Lane Keeping Aid	With						-	
Blind Spot Information System with Cross-Traffic Alert & Braking	With						-	
Safety & Security								
Hill Launch Assist & Roll Over Mitigation				With				
Hill Descent Control	With		With				-	
Airbags	x7 (Driver, Driver Knee, Front Passenger, Side, Curtain)			x6 (Driver, Front Passenger, Side, Curtain)				
Parking Sensors	Front and Rear		Rear				-	
Camera	360-Degree		Rear View				-	
ABS + EBD				With				
ESP with Traction Control System	With Electric Brake Booster						-	
Child Seat ISOFIX Anchor Points	With							



Scan QR code to download the Ford app

FORD APP KEY FEATURES

- Remote Vehicle Lock & Unlock** | Lock and unlock the doors of your vehicle from virtually anywhere.
- Remote Vehicle Start & Stop** | Remote start and stop your vehicle and cool the cabin with the last climate control setting before driving.
- Vehicle Locator** | Easily find your vehicle in crowded carparks.
- Vehicle Status** | Remotely monitor your oil life or check your fuel level and odometer.

YOUR PEACE OF MIND IS ON US

Enjoy a free general inspection service within 2 months / 2,000kms, whichever comes first, from your vehicle purchase and get free labor on your 1st and 2nd Periodic Maintenance Service with us.



FORD FAMILY GUARANTEE

A suite of product and service offerings designed for your utmost convenience

- Online Service Booking** | Time for a service? Book online wherever you are, 24/7. Select your preferred dealer, get an estimated cost with the Service Price Calculator, and schedule an appointment at your convenience.
- Express Service** | We know you like driving, not waiting. Our Express Service is dedicated to saving you time so you can get back on the road quicker.
- Pick-up and Delivery** | Service your Ford vehicle without interrupting your day. With Free Pickup & Delivery*, you can avail expert maintenance with door-to-door service.
- Scheduled Service Plan** | Prepaid periodic maintenance for up to 5 years—a smart choice for your peace of mind.
- Extended Warranty** | Get Ford's most comprehensive service protection plan that covers parts and labor to repair 1,000+ key components for up to 7 years or 250,000 kilometers.
- Emergency Roadside Assistance** | In case of an emergency, call our hotline +632 8459-4723 and we'll assist you 24/7.

Express Service, Extended Warranty, and Scheduled Service Plan are applicable to select Ford vehicles. Pickup & Delivery is available in select dealers. Terms and conditions apply. Enjoy a free general inspection service within 2 months / 2,000KM whichever comes first, from your vehicle purchase and get free labor on your 1st & 2nd Periodic Maintenance Service with us.

AVAILABLE COLORS

RESERVE NOW



Arctic White



Absolute Black



Luxe Yellow
Exclusive for Wildtrak



Aluminum Metallic
Except for Sport



Meteor Grey
Except for XL+



Blue Lightning
Except for XLS and XL+

*Not available for XLS and XL+

*Driver-assist features are supplemental and do not replace the driver's attention, judgment, and need to control the vehicle. May not operate at certain speeds, or in certain driving, road, or weather conditions. See Owner's Manual for details and limitations. SYNC screen appearance and functionality may change over time due to software updates. This brochure is designed to provide you with a general introduction to the Ford products referred to, and should be read in conjunction with the latest specification sheet. Image and illustrations are for information purposes and are indicative only. Ford Group Philippines reserves the right, at any time, at its discretion, and without prior notice, to discontinue or change the features, designs, materials, colors and other specification and the prices of its products, and to either permanently or temporarily withdraw any such products from the market without incurring and liability to any prospective purchaser. Please contact your local Ford Dealer for the latest information with respect to features, specifications, prices, optional equipment and availability before deciding to place an order.